

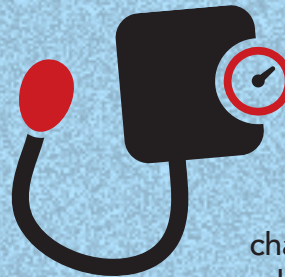
Station No.	Fire Station Location	Address
5	NE	257 N. Hillside
10	NE	2950 E. 21st St. N.
14	NE	6408 Farmview
18	NE	2808 N. Webb
1	NW	731 N. Main
3	NW	3261 N. Broadway
7	NW	2346 N. Coolidge
8	NW	661 N. Elder
13	NW	3162 W 42nd St. N.
16	NW	1632 N. Tyler
21	NW	2110 N. 135th St. W.
2	SE	1240 S. Broadway
9	SE	350 S. Edgemoor
11	SE	1845 George Washington Blvd.
15	SE	7923 E. Lincoln
19	SE	4440 S. Broadway
20	SE	2255 S. Greenwich
22	SE	2659 S. Hydraulic
4	SW	2423 W. Irving
12	SW	3443 S. Meridian
17	SW	10651 W. Maple

Post No.	EMS Post Location	Address
3	NE	3002 E. Central, Wichita
5	NE	698 Caddy, Wichita
8	NE	501 E. 53rd N., Wichita
10	NE	636 N. St. Francis, Wichita
12	NE	3320 N. Hillside, Wichita
15	NE	2808 N. Webb, Wichita
45	NE	616 E. 5th, Valley Center
1	NW	2622 W. Central, Wichita
14	NW	4030 N. Reed, Maize
4	SE	1100 S. Clifton, Wichita
6	SE	6401 Mabel, Haysville
9	SE	1218 S. Webb, Wichita
11	SE	1401 N. Rock, Derby
EMS Office	SE	1015 Stillwell, Wichita
2	SW	1903 W. Pawnee, Wichita
7	SW	1535 S. 199th W., Goddard

Sharing blood pressure readings with your doctor

Self-measured blood pressure can help you and your doctor manage your pressure. They can:

- Show what your blood pressure is like during normal, daily routines.
- Reduce healthcare costs.
- Help identify blood pressure patterns.
- Help tell how lifestyle changes and medications are working to lower your pressure.



How do I get readings to my doctor?

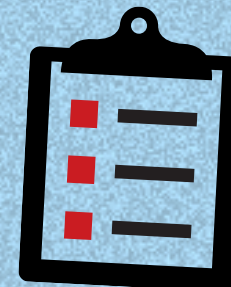
Talk with your health care team about the best way to communicate readings. Based on your monitor and clinic services, options may include:

Phone and talk to a care team member or leave readings via voicemail.

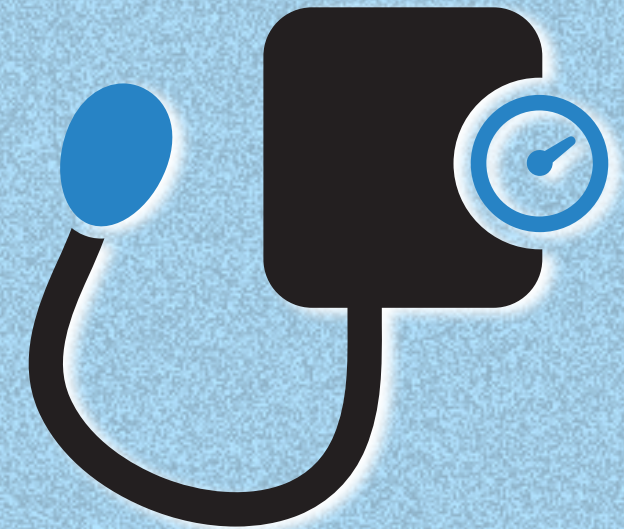
Use the **health clinic app** to report readings.

Take a photo of your blood pressure log and send to clinic or share at next visit.

Let your device do the work. After setup, some blood pressure monitors will send readings to your clinic.



Managing high blood pressure



Track your pressure yourself or find a place nearby to check it for you



Kansas Business Group on Health

